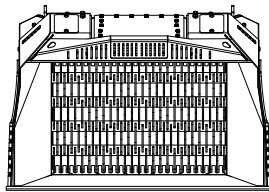
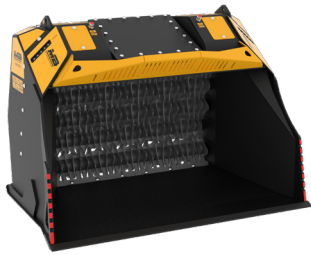
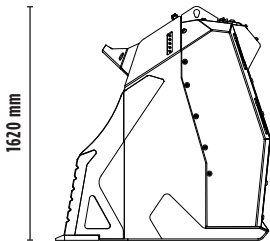


MB-HDS523



2330 mm




1620 mm

1500 mm

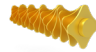





SPECIFICATIONS

	Recommended excavator	ton	30 - 45
	Weight	ton	3,35
	Load capacity	m ³	2,00
	Pressure	bar	250 - 300
	Oil flow rate*	l/min	230 - 250

* The minimum hydraulic flow rate value must be alongside the required operating pressure.

SHAFT KIT

KIT	ADJUSTMENT*	APPLICATION
 RQ8/RQ20/RQ50 Sifting kit	8/20/50 mm	Sifting damp/dry soil Soil aeration
 RM Mixer kit	-	Soil aeration Compost aeration Charcoal reduction Glass reduction Drywall reduction
 RE8/RE16 Fine Sifting kit	8/16 mm	Sifting damp/dry soil
 RC Compost kit	36,5 mm	Shredding foliage and small branches Composting

* Shafts in closed position.

ACCESSORIES

RQ8/RQ20/RQ50 Sifting kit	RM Mixer kit
RE8/RE16 Fine Sifting kit	RC Compost kit
Shaft holder	24 month warranty

APPLICATION AREAS



QUARRIES



MINES



PIPELINES



RECYCLING AGGREGATES



EXCAVATION



FOUNDRIES



MAINTAINING LANDSCAPE AND AGRICULTURAL AREAS