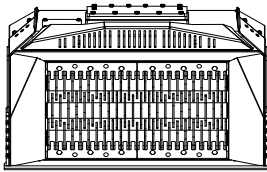
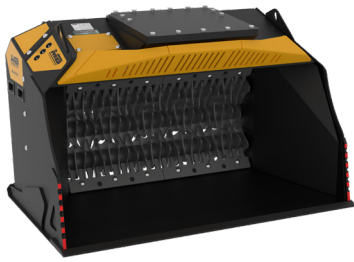
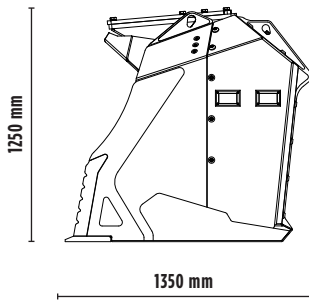


# SHAFT SCREENER

# MB-HDS320



2050 mm



1250 mm

1350 mm



## SPECIFICATIONS







Recommended excavator	ton	18 - 24
Recommended backhoe loader/loader*	ton	11 - 14
Weight	ton	2,10
Load capacity	m <sup>3</sup>	1,35
Pressure	bar	250 - 300
Oil flow rate**	l/min	120 - 160

\* Please verify machine's Rated Operating Capacity.

\*\* The minimum hydraulic flow rate value must be alongside the required operating pressure.

## SHAFT KIT

KIT	ADJUSTMENT*	APPLICATION
 RQ8/RQ20/RQ50 Sifting kit	8/20/50 mm	Sifting damp/dry soil Soil aeration
 RM Mixer kit	-	Soil aeration Compost aeration Charcoal reduction Glass reduction Drywall reduction
 RE8/RE16 Fine Sifting kit	8/16 mm	Sifting damp/dry soil
 RC Compost kit	36,5 mm	Shredding foliage and small branches Composting

\* Shafts in closed position.

## ACCESSORIES

RQ8/RQ20/RQ50 Sifting kit	RM Mixer kit
RE8/RE16 Fine Sifting kit	RC Compost kit
Shaft holder	24 month warranty

## APPLICATION AREAS



ROAD WORKS



QUARRIES



MINES



TUNNELS



ENCLOSED SPACES



PIPELINES



RECYCLING AGGREGATES



EXCAVATION



URBAN CONSTRUCTION  
SITES



FOUNDRIES



MAINTAINING LANDSCAPE  
AND AGRICULTURAL AREAS