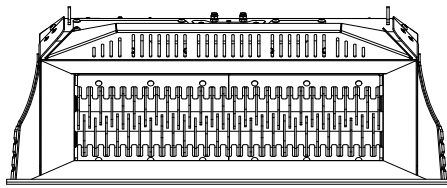
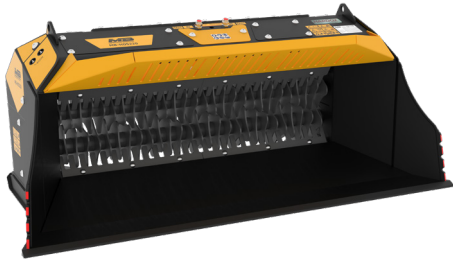
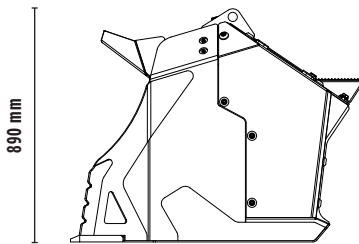


## SHAFTS SCREENER

# MB-HDS220



2220 mm





890 mm

1060 mm





## SPECIFICATIONS

 Recommended backhoe loader/loader*	ton	$\geq 7 \leq 11$
 Recommended skid steer loader*	ton	$\geq 4,5 < 10$
Weight	ton	1,00
Load capacity	m <sup>3</sup>	0,60
Pressure	bar	230 - 280
Oil flow rate**	l/min.	90 - 150

\* Please verify machine's Rated Operating Capacity.

\*\* The minimum hydraulic flow rate value must be alongside the required operating pressure.

## SHAFT KIT

KIT	ADJUSTMENT*	APPLICATION
 RQ8/RQ20 Sifting kit	8/20 mm	Sifting damp/dry soil Soil aeration
 RM Mixer kit	-	Soil aeration Compost aeration Charcoal reduction Glass reduction Drywall reduction

\* Shafts in closed position.

## ACCESSORIES

RQ8/RQ20 Sifting kit	Shaft holder
RM Mixer kit	24 month warranty

## APPLICATION AREAS



ROAD WORKS



TUNNELS



ENCLOSED SPACES



PIPELINES



RECYCLING  
AGGREGATES



EXCAVATION



URBAN  
CONSTRUCTION SITES



FOUNDRIES



MAINTAINING LANDSCAPE  
AND AGRICULTURAL AREAS