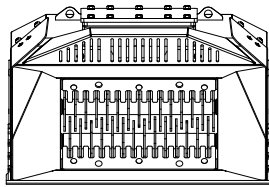
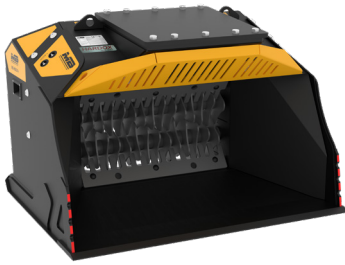
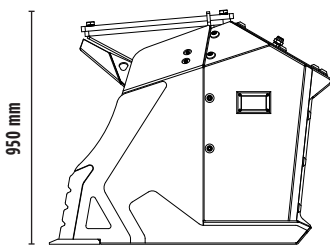


# MB-HDS214

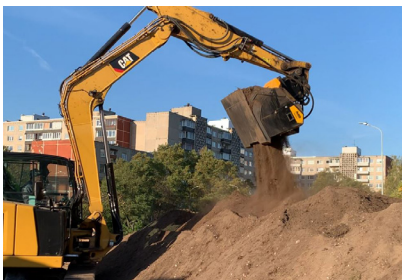


1380 mm



950 mm

1125 mm



## SPECIFICATIONS

	Recommended excavator	ton	9 -13
	Recommended backhoe loader/loader*	ton	8 -13
	Recommended skid steer loader*	ton	4 -10
	Weight	ton	0,82
	Load capacity	m <sup>3</sup>	0,40
	Pressure	bar	200 - 250
	Oil flow rate**	l/min	75 - 120

\* Please verify machine's Rated Operating Capacity.

\*\* The minimum hydraulic flow rate value must be alongside the required operating pressure

## SHAFT KIT

KIT	ADJUSTMENT*	APPLICATION
RQ8/RQ20/RQ50 Sifting kit	8/20/50 mm	Sifting damp/dry soil Soil aeration
RM Mixer kit	-	Soil aeration Compost aeration Charcoal reduction Glass reduction Drywall reduction
RE8/RE16 Fine Sifting kit	8/16 mm	Sifting damp/dry soil
RC Compost kit	36,5 mm	Shredding foliage and small branches Composting

\* Shafts in closed position.

## ACCESSORIES

RQ8/RQ20/RQ50 Sifting kit	RM Mixer kit
RE8/RE16 Fine Sifting kit	RC Compost kit
Shaft holder	24 month warranty

## APPLICATION AREAS



ROAD WORKS



TUNNELS



ENCLOSED SPACES



PIPELINES



RECYCLING AGGREGATES



EXCAVATION



URBAN CONSTRUCTION SITES



FOUNDRIES



MAINTAINING LANDSCAPE AND AGRICULTURAL AREAS