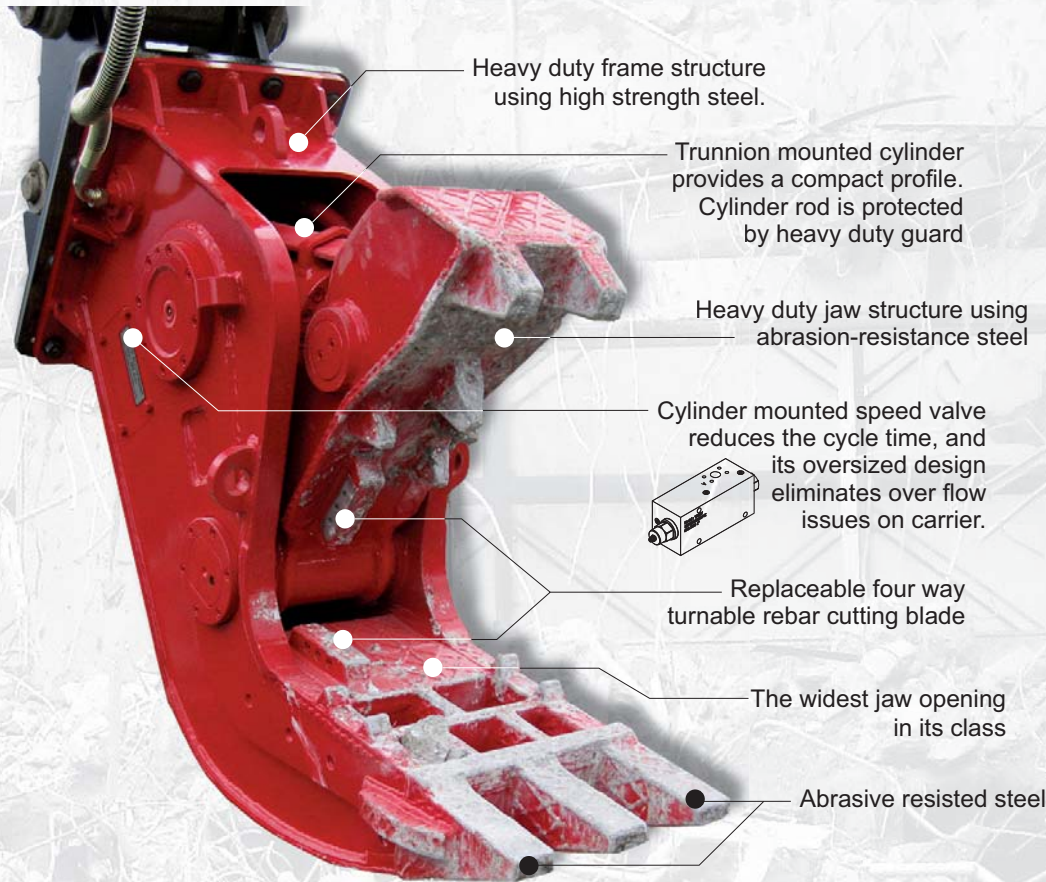


# MINI PUVERIZER VSP122

Designed for secondary processing to remove rebar and size concrete.

**VAN-ED**  
EQUIPMENT  
ATTACHMENTS & MORE

604-888-9020  
sales@vanedequipment.com

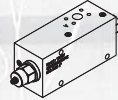


Heavy duty frame structure using high strength steel.

Trunnion mounted cylinder provides a compact profile. Cylinder rod is protected by heavy duty guard

Heavy duty jaw structure using abrasion-resistance steel

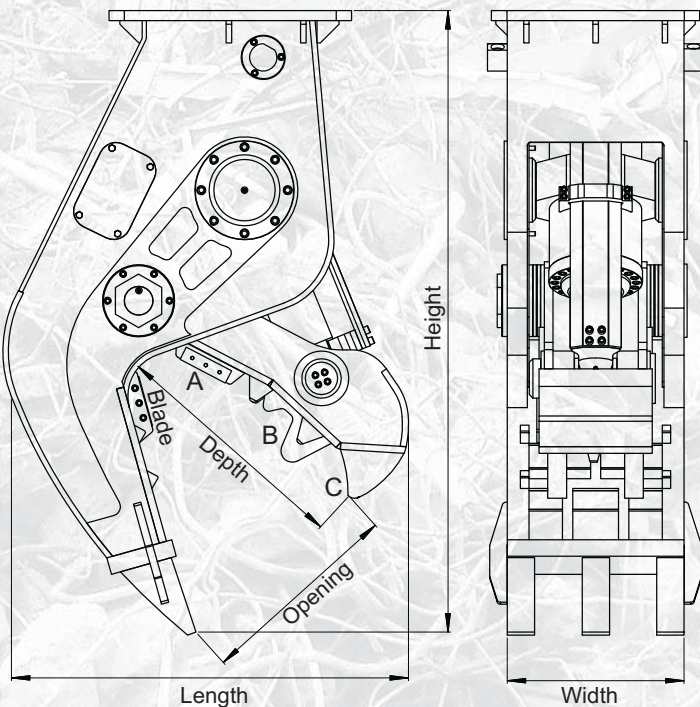
Cylinder mounted speed valve reduces the cycle time, and its oversized design eliminates over flow issues on carrier.



Replaceable four way turnable rebar cutting blade

The widest jaw opening in its class

Abrasive resisted steel



Model	Unit	VSP122	Unit	VSP122	
Carrier Weight	M/T	7~12	M/T	7~12	
Operating Weight	kg	570	lb	1,270	
DIM	Height	1,380		54	
	Length	960	inch	38	
	Width	355		14	
Jaw Opening		700		28	
Jaw Depth	mm	680	inch	27	
Blade Length		102		4.0	
Cutting Force [A]		87		192	
Crushing Force	[B] Mid	M/T (Metric Ton)	34	lb (X1000)	74
	[C] Tip		21		46
Rated Pressure	bar	250	psi	3,600	
Rated Oil Flow	lpm	80	gpm	21	
Cycle time	Open	sec	2.0	sec	2.0
	Close		2.6		2.6

Specifications subject to change without notice.

- Height : Flat Top Mounting
- Cycle Time : Measured at rated flow under no load.