

MINI MULTI PROCESSOR VMC(S)

Unlike hydraulic breakers, Mini Processors with Crusher jaw will provides noise-free and vibration-free solution to any demolition project.

Unlike single cylinder design, dual cylinder design provides

- Wide opening, powerful initial force and optimized angle of attack.
- Independent cylinder movement minimizes the stress to the carrier.

With versatile interchangeable jaw and tooth design [VMC(S)-H model only], Mini Processors provide the simple but powerful tool for demolition and recycling contractors.



604-888-9020
sales@vanedequipment.com

Speed Valve reduces cycle time

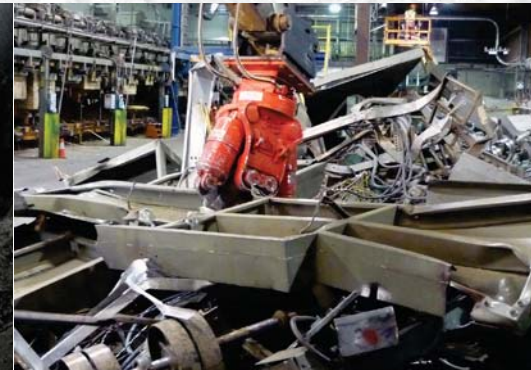
Hydraulic rotation motor equipped with dual relief valve

Heavy Duty Cylinder Guard

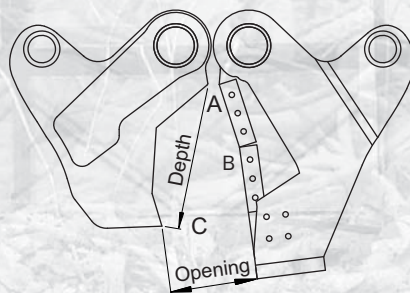
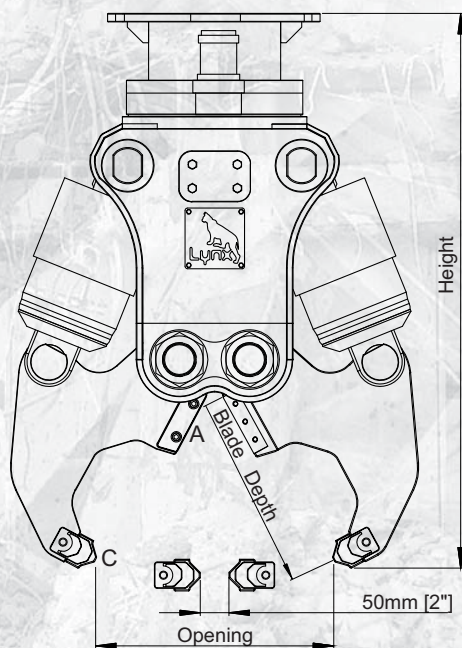
Hardened Pin and T-Bushing Design

High strength steel and abrasive resisted steel

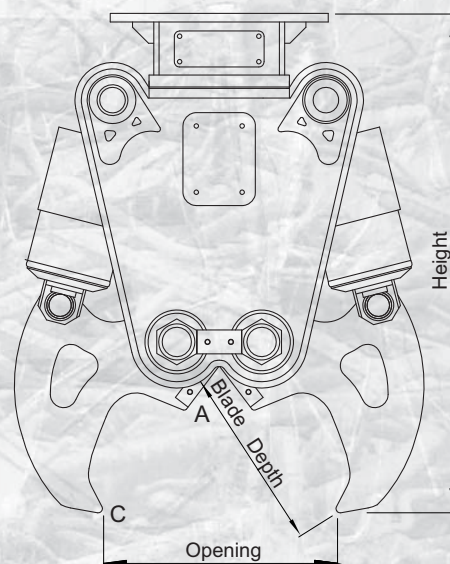
Field Replaceable Teeth



VMC(S)-H Series



VMC Series



Model	Unit	VMC10	VMC30	VMC50H	VMS50H	VMC80H	Unit	VMC10	VMC30	VMC50H	VMS50H	VMC80H	
Carrier Weight	M/T	1~2	2~3	4~7		7~12	M/T	1~2	2~3	4~7		7~12	
Operating Weight	kg	125	280	410	438	730	lb	275	616	902	964	1,610	
		25	35	45	80	89		55	77	99	176	196	
Jaw	Opening	mm	290	430	50~450	160	620	inch	11.4	17.3	2~17	6.3	24.4
	Depth		280	345	370	270	580		11.0	13.6	14.6	10.6	22.8
Force	[A] Throat	M/T (MetricTon)	148	188	220	288	347	lb (X1000)	325	414	484	634	763
	[B] Mid		-	-	-	157	100		-	-	-	345	220
	[C] Tip		23	37	47	59	63		51	82	103	130	139
Rated Pressure	bar	250		320		320	psi	3,600		4,600		4,600	
Rated Oil Flow	lpm	45	60	75		140	gpm	12	16	20		37	
Overall Dimension	Height	mm	860	940	1,080	1,100	1,370	inch	33.8	37	43	43	54
	Width		670	730	770	740	985		26.4	29	30	29	39
Hyd. Rotation	Pressure	bar			170	170	psi			2,500		2,500	
	Oil Flow	lpm	Free Rotation		13	32	gpm	Free Rotation		3.4	8		
	Speed	RPM			20	15	RPM			20	15		
Cycle time	Open	sec	1.4	2.0	1.8	1.3	sec	1.4	2.0	1.8	1.3		
	Close		1.1	1.3	1.0	1.5		1.1	1.3	1.0	1.5		

Specifications subject to change without notice.

- R model comes with continuous 360degree hydraulic rotation.
- Height Dim. : Flat top mounting. Measured jaw fully closed.
- Width Dim. : Measured jaw wide open.
- Cutting Force [A] : At rebar blade center
- Cycle time : Measured at rated flow under no load.