

DEMOLITION MULTI PROCESSORS VUC-A

With versatile interchangeable jaw and tooth design, VUC-A provides the simple but powerful tool for demolition and recycling contractors.

Unlike conventional shears, VUC-A with Shear jaw provides clean cut to wide plates and beams without jamming.

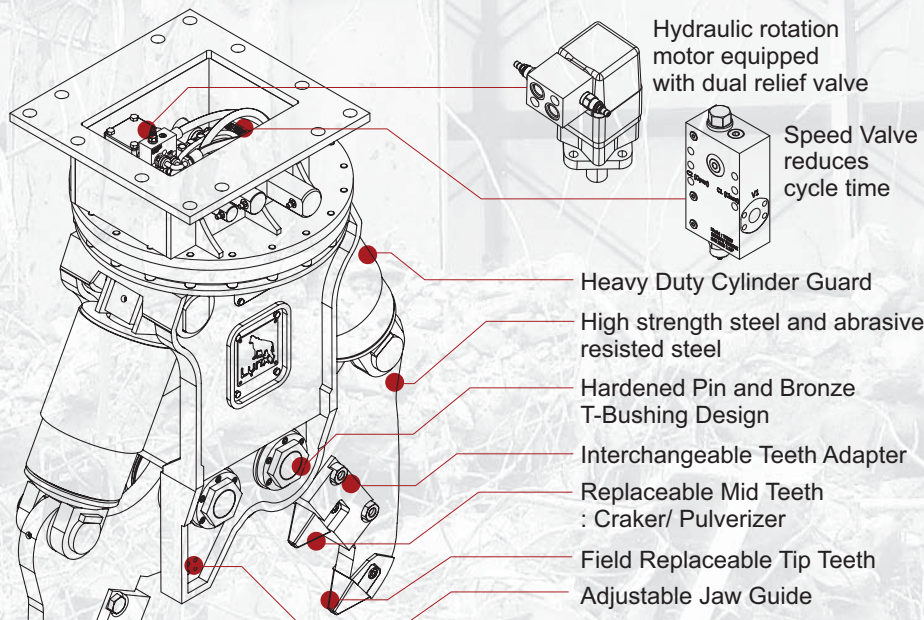
Replaceable teeth reduce maintenance time and cost.

Dual Cylinder Dual Pin design provides

- Wide opening and tremendous initial crushing force, and optimized angle of attack.
- Asymmetric design and independent cylinder movement minimize the stress to the carrier.



604-888-9020
sales@vanedequipment.com



INTERCHANGEABLE JAW

SHEAR JAW [S JAW]

CRUSHER JAW [CB JAW]

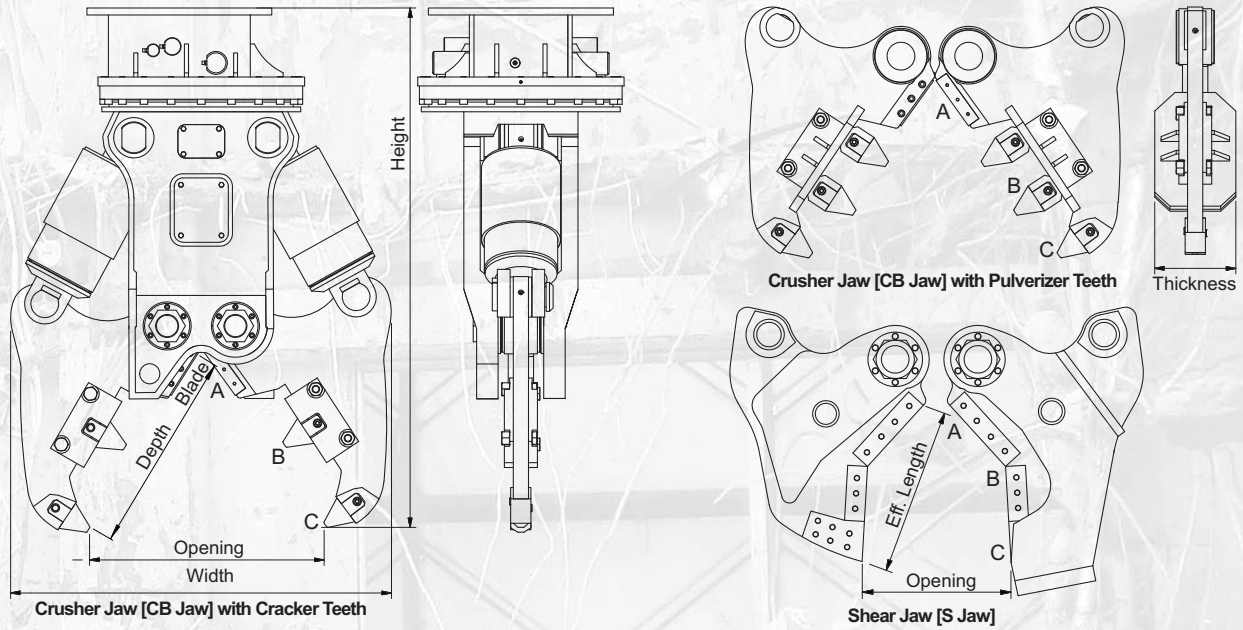
Craker Teeth

Pulverizer Teeth

- 1 Bolt-on Interchangeable Craker Teeth Adapter
- 2 Bolt-on Interchangeable Pulverizer Teeth Adapter
- 3 Bolt-on Replaceable Teeth
- 4 Welded Teeth Adapter

MIDSIZE DEMOLITION MULTI PROCESSORS VUC-A

FOR 10-20 TON CARRIER



Model		Unit	VUC 152A	VUC 202A	Unit	VUC 152A	VUC 202A
Carrier Weight		M/T	13~20	20~40	M/T	13~20	20~40
Weight with CB Jaw		kg	1,430	2,210	lb	3,150	4,860
Weight with X Jaw			1,380	2,190		3,040	4,820
Weight with S Jaw			1,347	2,010		2,960	4,420
Crusher Jaw [CB Jaw]	Height	mm	1,610	2,180	inch	63	86
	Width		1,120	1,440		44	57
	Opening		750	955		30	38
	Depth		610	820		24	32
	Blade Length		140	220		5.5	8.7
Cutting Force [A, Throat]		M/T (Metric Ton)	526	1,048	lb (X1000)	1,157	2,310
Crushing Force CB Jaw	[B] Middle		142	233		313	514
	[C] Tip		82	131		181	289
Shearing Force S Jaw	[B] Apex		243	350		535	772
	[C] Tip		104	172		229	380
Rated Pressure		bar	320		psi	4,600	
Rated Oil Flow		lpm	210	280	gpm	55	74
Hyd. Rotation	Pressure	bar	210		psi	3,000	
	Oil Flow	lpm	28~32	32~45	gpm	7~8	8~12
	Speed	RPM	10~15		RPM	10~15	
Cycle time	Open	sec	1.5	2.5	sec	1.5	2.5
	Close		1.4	2.3		1.4	2.3

Specifications subject to change without notice.

- Height Dim. : Flat top mounting. Measured jaw fully closed.
- Width Dim. : Measured jaw wide open.
- Cutting Force [A] : At rebar blade center
- Cycle time : Measured at rated flow under no load.