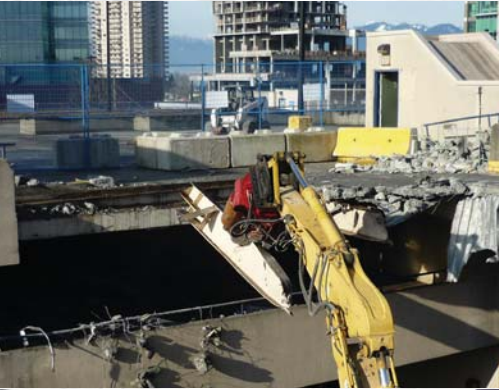


LARGE RECYCLING MULTI PROCESSORS VUS-A

FOR 20-60 TON CARRIER

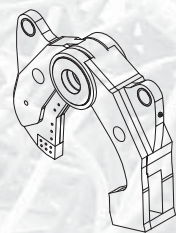
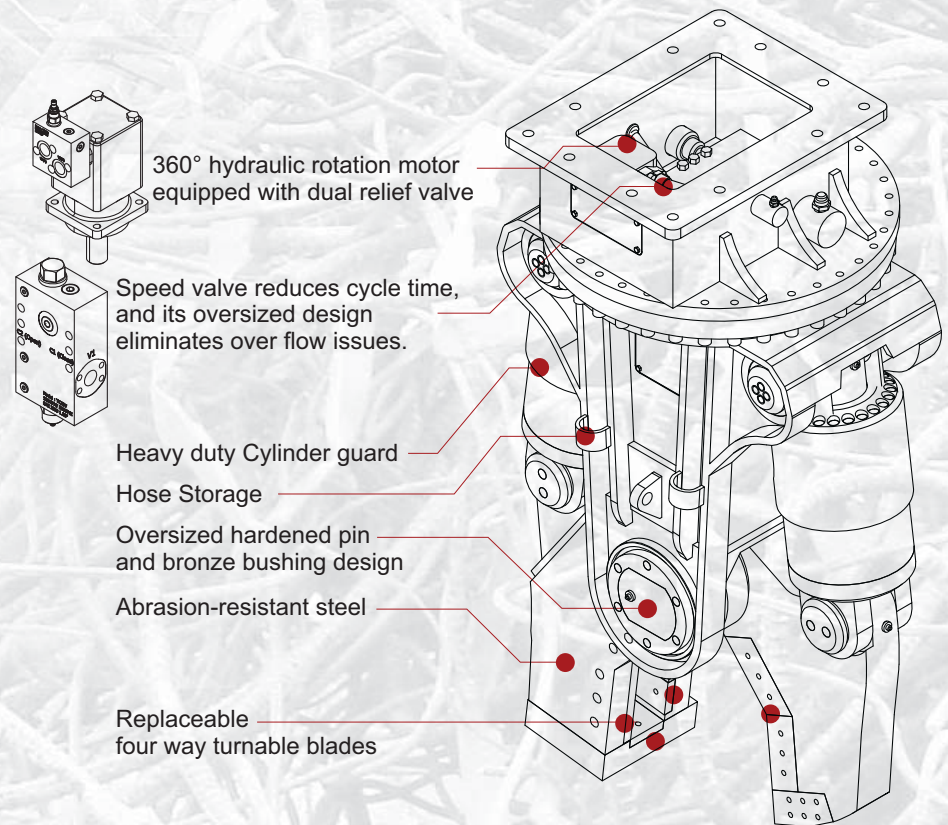


With shear jaw set, this third member primary shear is powerful tool for steel structure demolition and steel recycling facilities. Unlike bulky second member shear, VUS shear provides high maneuverability and production for scrap yard. Interchangeable jaws are optional for those who need versatile tools; Cutter jaw is specially effective cutting tank and wide plate.

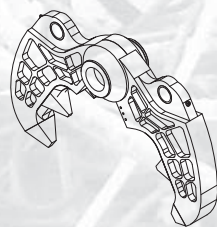
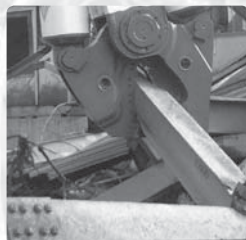
- Single Pin dual cylinder design provides
- Optimized shearing/ cutting angle and continuous force through the cycle.
 - Zero slip between two jaws.
 - Asymmetric design and independent cylinders movement minimize the stress to the carrier.



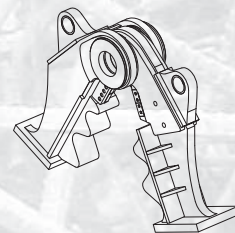
604-888-9020
sales@vanedequipment.com



Shear Jaw [S Jaw]



Crusher Jaw [CW Jaw]



Pulverizer Jaw [PW Jaw]

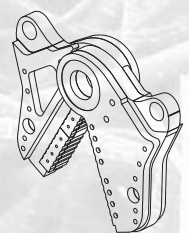
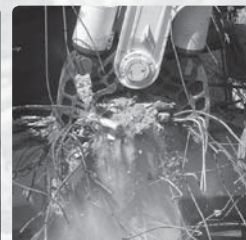
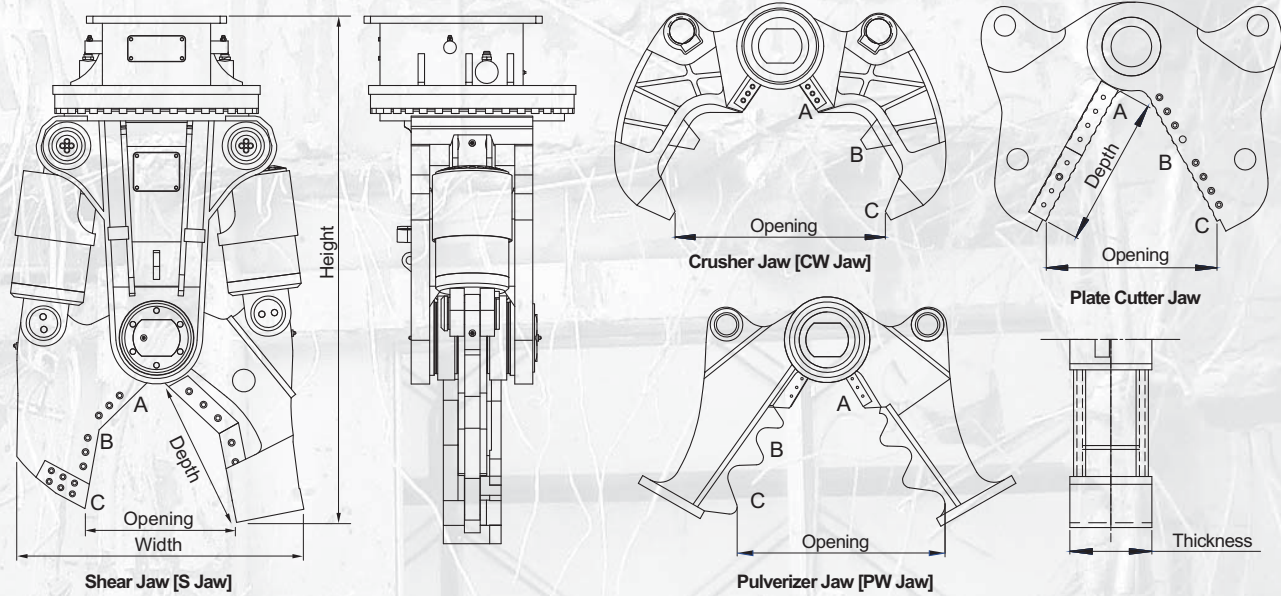


Plate Cutter Jaw



LARGE RECYCLING MULTI PROCESSORS VUS-A

FOR 20-60 TON CARRIER



| Model | | Unit | VUS202 | VUS302 | Unit | VUS202 | VUS302 |
|---------------------------------|--------------|---------------------|--------|--------|---------------|--------|--------|
| Carrier Weight | | M/T | 20~30 | 28~45 | M/T | 20~30 | 28~45 |
| Weight with S Jaw | | kg | 2,085 | 3,295 | lb | 4,600 | 7,265 |
| Weight with CW Jaw | | | 2,200 | 3,100 | | 4,840 | 6,820 |
| Weight with P Jaw | | | 2,200 | 3,240 | | 4,840 | 7,140 |
| Weight with Cutter Jaw | | | 2,500 | 3,310 | | 5,510 | 7,230 |
| Shear Dimesions [S Jaw] | Opening | mm | 490 | 530 | inch | 19 | 21 |
| | Depth | | 585 | 680 | | 23 | 27 |
| Crusher Dimesions [CW Jaw] | Opening | mm | 950 | 1,050 | inch | 37 | 41 |
| | Blade Length | | 220 | 250 | | 9 | 10 |
| Pulverizer Dimesions [PW Jaw] | Opening | mm | 850 | 950 | inch | 33 | 37 |
| | Thickness | | 270 | 290 | | 11 | 11 |
| | Blade Length | | 220 | 250 | | 9 | 10 |
| Cutter Dimesions | Opening | mm | 710 | 760 | inch | 28 | 30 |
| | Eff. Length | | 625 | 690 | | 25 | 27 |
| Cutting/ Crushing Force | [A] Throat | M/T (Metric Ton) | 996 | 1,360 | lb (X1000) | 2,190 | 2,990 |
| | [B] Middle | | 269 | 413 | | 590 | 910 |
| Cutting/ Crushing Force [C] Tip | | | 156 | 244 | | 340 | 540 |
| Rated Pressure | | bar | 320 | | psi | 4,600 | |
| Rated Oil Flow | | lpm | 280 | | gpm | 74 | |
| DIM with Crusher jaw | Height | mm | 2,070 | 2,390 | inch | 81 | 94 |
| | Width | | 1,150 | 1,350 | | 45 | 53 |
| Hyd. Rotation | Pressure | bar | 210 | | psi | 3,000 | |
| | Oil Flow | lpm | 32~45 | | gpm | 8~12 | |
| | Speed | RPM | 10~15 | | RPM | 10~15 | |
| Cycle time | Open | sec | 2.5 | 3.2 | sec | 2.8 | 3.2 |
| | Close | | 2.3 | 3.8 | | 2.6 | 3.8 |

Specifications subject to change without notice.

- Height Dim. : Flat top mounting. Measured jaw fully closed.
- Width Dim. : Measured jaw wide open.
- Cutting Force [A] : At rebar blade center
- Cycle time : Measured at rated flow under no load.