

LARGE DEMOLITION MULTI PROCESSORS VUC-A



With versatile interchangeable jaw and tooth design, VUC-A provides the simple but powerful tool for demolition and recycling contractors.

Unlike conventional shears, VUC-A with Shear jaw provides clean cut to wide plates and beams without jamming.

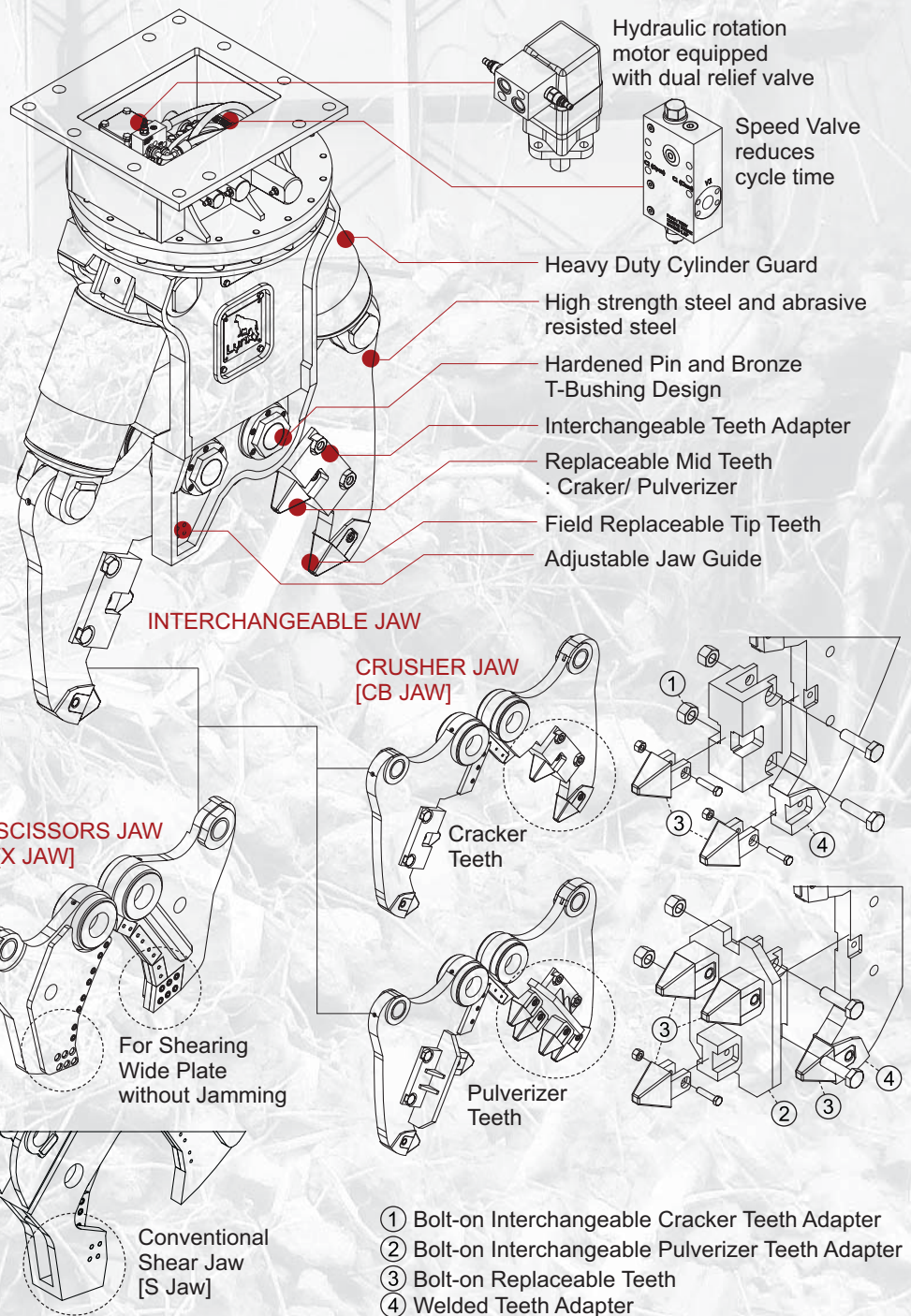
Replaceable teeth reduce maintenance time and cost.

Dual Cylinder Dual Pin design provides

- Wide opening and tremendous initial crushing force, and optimized angle of attack.
- Asymmetric design and independent cylinder movement minimize the stress to the carrier.

VAN-ED
EQUIPMENT
ATTACHMENTS & MORE

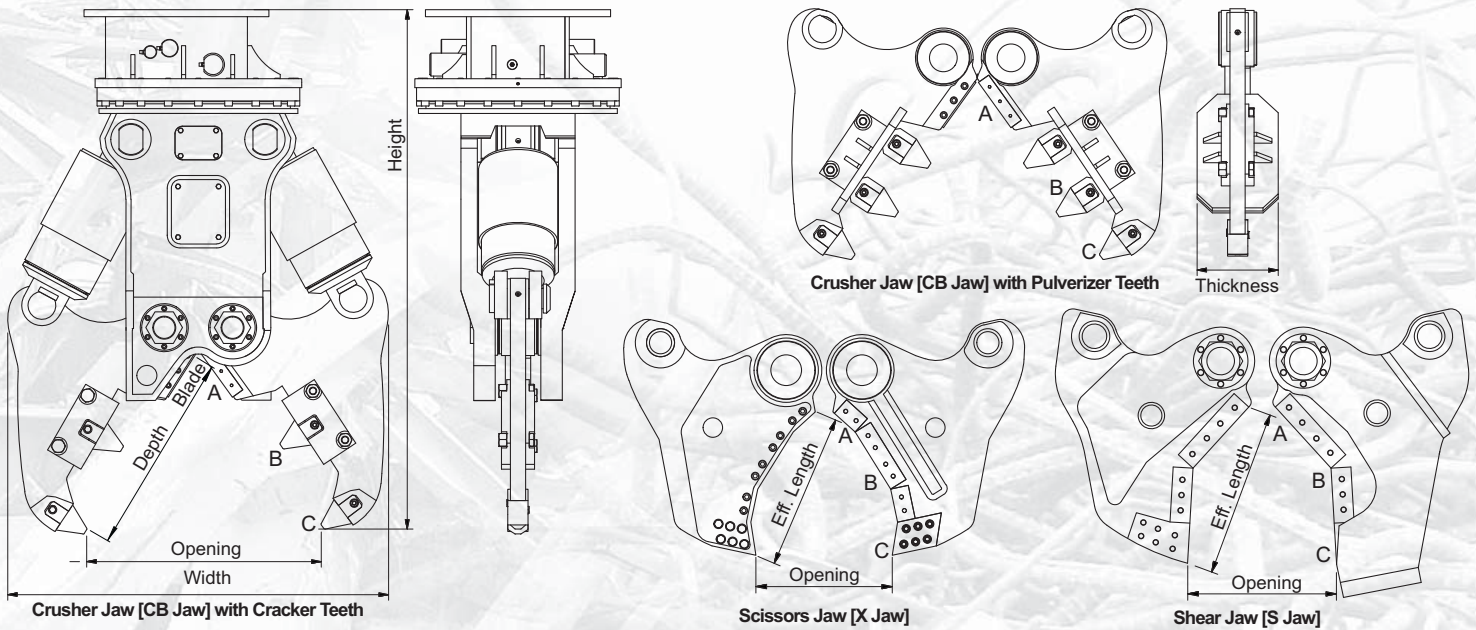
604.888.9020
sales@vanedequipment.com



FOR 20-60 TON CARRIER

LARGE DEMOLITION MULTI PROCESSORS VUC-A

FOR 20-60 TON CARRIER



Model		Unit	VUC 202A	VUC 302A	VUC 452A	Unit	VUC 202A	VUC 302A	VUC 452A
Carrier Weight		M/T	20~40	29~45	45~65	M/T	20~40	29~45	45~65
Weight with CB Jaw		kg	2,210	2,750	5,480	lb	4,860	6,060	12,060
Weight with X Jaw			2,190	2,750	6,050		4,820	6,060	13,310
Weight with S Jaw			2,010	2,875	5,960		4,420	6,330	13,110
Crusher Jaw [CB Jaw]	Height	mm	2,180	2,450	2,810	inch	86	96	111
	Width		1,440	1,720	2,350		57	68	93
	Opening		955	1,050	1,340		38	41	53
	Depth		820	945	1,100		32	37	43
Blade Length	220		250	250	8.7		10	9.8	
Scissors Jaw [X Jaw]	Height		1,930	2,330	2,760		76	92	109
	Width		1,500	1,350	1,850		59	53	73
	Opening		505	737	800		19.9	29	31.5
	Depth		545	510	955		21.5	20	37.6
	Eff. Length		450	415	780		17.7	16.3	30.7
Cutting Force [A, Throat]		M/T (Metric Ton)	1,604	1,729	3,597	lb (x1000)	3,529	3,804	7,912
Crushing Force CB Jaw	[B] Middle		357	472	678		784	1,040	1,492
	[C] Tip		201	231	374		441	510	823
Shearing Force X Jaw	[B] Apex		270	295	827		594	650	1,820
	[C] Tip		175	191	384		386	422	844
Shearing Force S Jaw	[B] Apex		381	507	588		839	1,116	1,294
	[C] Tip	188	210	273	413	508	600		
Rated Pressure		bar		320	psi		4,600		
Rated Oil Flow		lpm	280	280	390	gpm	74	74	103
Hyd. Rotation	Pressure	bar		210	psi		3,000		
	Oil Flow	lpm	32~45	32~45	75~105	gpm	8~12	8~12	20~27
	Speed	RPM		10~15		RPM		10~15	
Cycle time	Open	sec	2.5	3.2	4.2	sec	2.5	3.2	4.2
	Close		2.3	3.8	5.4		2.3	3.8	5.4

Specifications subject to change without notice.

- Height Dim. : Flat top mounting. Measured jaw fully closed.
- Width Dim. : Measured jaw wide open.
- Cutting Force [A] : At rebar blade center
- Cycle time : Measured at rated flow under no-load.